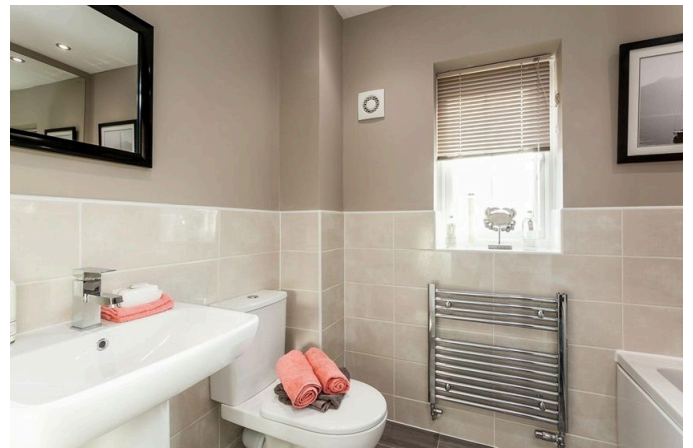


The Elms - The Collaton, Shaftmoor Lane, Hall Green

£391,995

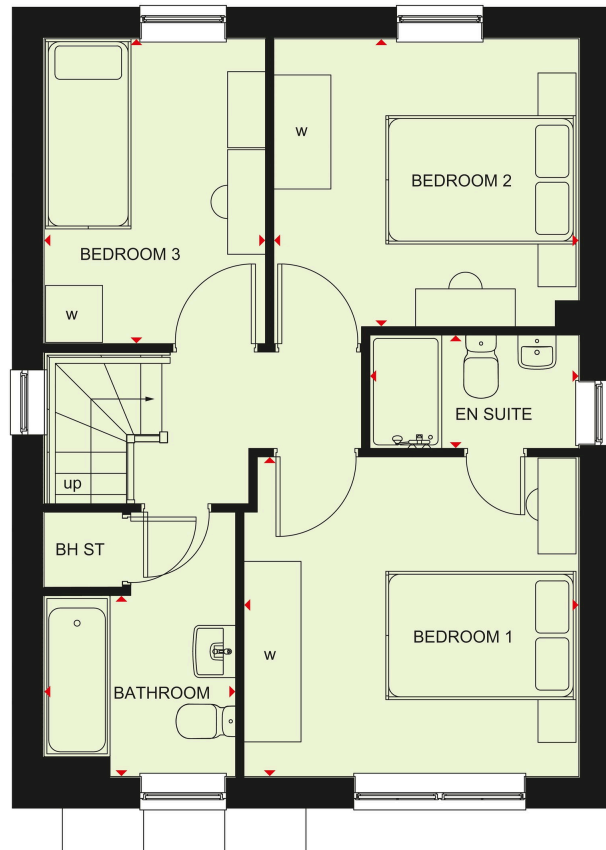
3 2 1



3 Union Road, Shirley, Solihull B90 3BT

sales • new homes • land • commercial • mortgages • auction

- Brand New Family Home
- Five Star Developer NHBC
- Master Bedroom with En-Suite
- Dual Aspect Lounge
- Contribution towards flooring - worth £3,699
- Energy Efficient EPC A/B
- Open Plan Kitchen and Dining
- £18,499 Deposit Boost
- Two parking spaces
- Book your appointment today



Walk into your new light and spacious home.

This magnificent detached 3 bedroom house is glowing. With 2 parking spaces and a garage. A welcoming open plan kitchen/dining room to make warm memories with those who make your new house a home.

3 Union Road, Shirley, Solihull B90 3BT

sales • new homes • land • commercial • mortgages • auction